

Are you  
ready?

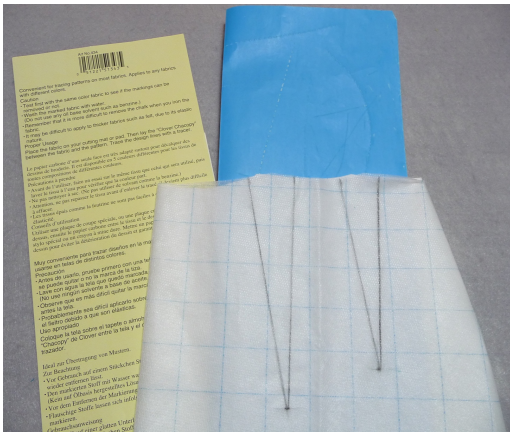


Brought to you by Joanne Banko  
[www.letsgosew.com](http://www.letsgosew.com)

**Tool Tip:** Use wash-out transfer paper and a dull tracing wheel to easily transfer pattern markings such as darts, pocket placement, buttonhole positions, etc.



Slip tracing paper between wrong sides of fabric to trace markings. **Tip:** For straight lines I like to place a quilting ruler along the line and run the tracing wheel alongside it.



Clover Chacopy washes out easily from most (washable) fabrics but it is still a good idea to test first on a scrap of fabric. To be really safe I would recommend ironing over the mark as well and then testing to make sure it is removed in normal laundering. Click on the link below to view this product on the Clover website.

<http://www.clover-usa.com/en/marketing-tools/181-chacopy-tracing-paper.html>

I like to use a dull rather than serrated tracing wheel for transferring all markings. You may need to use a bit more pressure with this dull wheel. Below you will find a link to a Clover brand version that is slightly updated from mine which has no indentations whatsoever.

<http://www.clover-usa.com/en/accessories/205-soft-tracing-wheel-white-plastic.html>

All Content Copyright ©2017 Joanne Banko

Opinions are the author's and do not necessarily represent any specific company or manufacturer, named or un-named.  
Information presented in good faith, deemed reliable but not guaranteed.